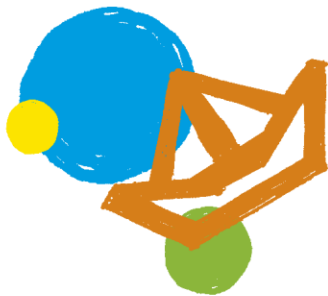




SCHOOL FEES

POLICY

2019-2020



Waddenweg 87
2134 XL Hoofddorp
+31 (0)23 303 59 24

info@optimist-international-school.nl
www.optimist-international-school.nl



**OPTIMIST
INTERNATIONAL
SCHOOL**





Dear Parents/Guardians,

Optimist International School is able to offer first-class international education at a reasonable cost to families thanks to funding from the Dutch Ministry of Education. Next to this we have to charge school fees which are set annually, in accordance with Dutch International Primary Guidelines. The tuition fees enable us to keep the class sizes small, to hire staff internationally and to provide a modern, caring and supportive learning environment.

Optimist International School is a member of DIS, Dutch International (Primary and Secondary) Schools (www.dutchinternationalschools.nl), all of whom are partially funded by the Dutch government. Since this funding does not cover all costs, Dutch International School are allowed to charge school fees, within a pre-agreed range, with permission from the Dutch Ministry of Education.

To process your application, you have to pay a non-refundable admission fee of 200 euros and the deposit of 500 euros per Pupil which is part of the first invoice for the school fees. This deposit is refundable when your child leaves the school and all financial obligations have been fulfilled.

The Annual school fees is 4700 euros which covers all educational costs including field trips, activities and excursions.

By signing the accompanying agreement, you confirm to proceed with payments and accept the terms and conditions stated in the attached regulations. We kindly request you to fill in and sign the attached agreement and return it in to our school administration department together with the admission forms. Admission will only be possible if this form is signed and returned.

Kind regards,

Mrs. Anne-Marie van Holst-Steenmeijer
Director of the School.

SCHOOL FEE STRUCTURE

To process your application, you have to pay a non-refundable admission fee of 200 euros per pupil and the deposit of 500 euros per pupil which is part of the first invoice for the school fees. This deposit is refundable when your child leaves the school and all financial obligations have been fulfilled.

The Annual school fees is 4700 euros which covers all educational costs including field trips, activities and excursions. You can choose to pay in 1 or 2 or 4 instalment, which can be arranged with the finance team.

If you start in:	Payment in full (in euros)
August, September	100% - 4,700
October	90% - 4,230
November	80% - 3,760
December	70% - 3,290
January	60% - 2,820
February	50% - 2,350
March	40% - 1,880
April	30% - 1,410
May	20% - 940
June, July	10% - 470

Please note our tuition fees detailed above are for the academic year 2019-2020. Our tuition fees for 2020-2021 have not yet been determined. We can confirm primary tuition fees will not increase by more than at most 5% in any year given.

SEAT RESERVATION FOR CURRENT OR NEXT SCHOOL YEAR

Children are turning four during the whole school year. They may start just before or from their 4th birthday. If you would like your child to attend Optimist International School, and he or she is turning four after the 1st of January, you are able to reserve a seat for the running school year if – at the moment of application – seats are available for the expected start date. This is also valid for children who are older and are joining our school during the running school year. If you would like to make use of this possibility, you will have to pay the admission fee of 200 euros in advance to secure your seat. This is to be paid within 14 days from the invoice date.



When you already have a child attending our school, brothers and sisters will be given priority.

AGE LIMIT FOR ADMISSIONS (3 YEARS OR OLDER)

If you would like to enroll your child in our school, you may complete the Registration of Interest on our website for the child below 3 years old. However we will start the admission procedure the day your child turns 3. We will contact you when the child is 3 years or older.

SCHOOL FEE REDUCTIONS AND PAYMENT STRUCTURE

School fees are reduced for families with three or more children attending our school at the same time. The school fee reduction for a third child is 30% and the reduction for a fourth child is 40%. Pupils starting during the school year will receive an invoice within 14 days after confirming the enrolment (after receiving the General Application for Admission form). This is to be paid within 14 days from the invoice date. New pupils starting directly after the summer holidays will receive an invoice for the school fees before July 1st or directly after confirming admission when registering after June 1st. Existing pupils will receive an invoice for the tuition fees before the 1st of June prior to the next academic year

Payment structure for new students starting in August/September till January

- Full payment of the invoice within 14 days from the invoice date or (if relevant), 1st payment due 1st of August. The invoice includes the admission fee and the deposit
- In two instalments: 2nd payment due 1st of November
- In four instalments: 3rd payment due 1st of January and 4th payment due 1st of March

Payment structure for new students starting in January or later

- Full payment of school fees (tuition, admission and deposit) within 14 days from the invoice date
- In two instalments: 2nd payment due 1st of March

Payment structure for existing students returning in the new academic year

- Full payment of tuition fees or (if relevant) 1st payment due 1st of August
- In two instalments: 2nd payment due 1st of November
- In four instalments: 3rd payment due 1st of January and 4th payment due 1st of March

You will find the final dates for payment of the instalments on the invoice.

WITHDRAWING FROM THE SCHOOL AND REFUNDING

When your child is attending our school, we hope to complete the academic year with him or her. Due to circumstances we understand it might be necessary to move during the school year and withdraw your child. If your child is not continuing at Optimist International School in the new academic year, please provide us with a written notice **one month** before the last school day at the latest. Please see below for the refunding of the tuition fee if your child leaves Optimist International School during the school year.

If you leave in:	Refunding of tuition fee (in euros)
September-December	50% of tuition fees paid
January	40%
February	30%
March	20%
April	10%
May-July	0%



BANK DETAILS

Please send your payment with the invoice number and the name of your child to:

STICHTING OPENBAAR PRIMAIR ONDERWIJS
HAARLEMMERMEER

Bank: ABN AMRO

IBAN: NL62ABNA0575370270

BIC: ABNANL2A

CONTACT DETAILS

OPTIMIST INTERNATIONAL SCHOOL

Phone: +31 23 303 59 24

Email: info@optimist-international-school.nl

Website: www.optimist-international-school.nl

DECLARATION

This is to declare that the undersigned,

(name of parent/guardian), has taken notice of the 'Admissions Policy', and accepts them to be part of this agreement. The undersigned agrees to the payment of the primary school fee contribution regarding the admission of the child _____

SIGNATURE

By signing below, you are agreeing that you have read, and will abide by, our articles of agreement and that all information given in this form is true and correct. The agreement shall be signed and returned to the administration office.

Name of the parent/guardian:

Signature of the Parent/Guardian:

Date and Place:

