

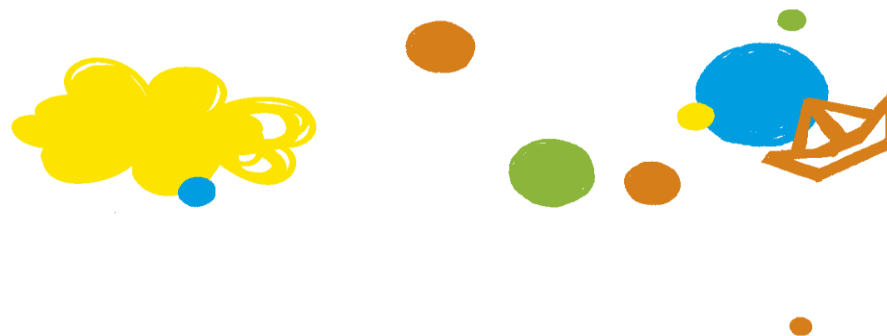
STAFF OVERVIEW 2020 – 2021



MILEPOST	GROUP	TEACHERS/DAYS	EMAIL ADDRESS	TEACHING ASSISTANTS	EMAIL ADDRESS
Early Years	1	Cristi Benitez	cristinabenitez@optimist-international-school.nl	Aoife Coughlan	aoifecoughlan@optimist-international-school.nl
MP1	2A	Elisa de La Pena (Tu, We, Th, Fr) Jenny Welle (Mo)	elisadelapena@optimist-international-school.nl jennywelle@optimist-international-school.nl	Jenny Welle Vanessa Vega	jennywelle@optimist-international-school.nl vanessavega@optimist-international-school.nl
	2B	Danielle Camp	daniellecamp@optimist-international-school.nl		
	3A	Ingeborg Beunder (Mo, We, Th, Fr) Jenny Welle (Tu)	ingeborgbeunder@optimist-international-school.nl jennywelle@optimist-international-school.nl		
	3B	Katie Zalewska	katarzynazalewska@optimist-international-school.nl		
MP2	4	Inez Du Preez (We, Th, Fr) Claire Ric-Hansen (Mo, Tu)	inezdupreez@optimist-international-school.nl clairerichansen@optimist-international-school.nl	Margit Tera Hans Kooijman	margittera@optimist-international-school.nl hanskooijman@optimist-international-school.nl
	4/5	Do O’Dea	doodea@optimist-international-school.nl		
	5	Clare Beatson	clarebeatson@optimist-international-school.nl		
MP3	6	Valentina Spyropoulou (We, Th, Fr) Carrie van Amstel (Mo, Tu, Th)	valentinaspyropoulou@optimist-international-school.nl carrievanamstel@optimist-international-school.nl	Roland Schmidt	rolandschmidt@optimist-international-school.nl
	6/7	Rolyn van Bergen (Mo, Tu, We) Amy Hubbard (Th, Fr)	rolynvanbergen@optimist-international-school.nl amyhubbard@optimist-international-school.nl		
	7	Ida Bloklander	idabloklander@optimist-international-school.nl		

SPECIALIST TEACHERS	EMAIL ADDRESS	ROLE
Katarina Hrnjez (days tbc)	katarinahrnjez@optimist-international-school.nl	Dutch as Additional Language
Francien van Beusekom (days tbc)	francienvanbeusekom@optimist-international-school.nl	Dutch as Additional Language
Valentina Spyropoulou (Mo, Tu)	valentinaspyropoulou@optimist-international-school.nl	English as Additional Language
Sandra Koehler (days tbc)	sandrakoehler@optimist-international-school.nl	Physical Education
Elisa de la Pena (Mo)	elisadelapena@optimist-international-school.nl	School Counsellor, supports or advises with specific (educational) needs and coordinates consults with external care
Ingeborg Beunder (Tu)	ingeborgbeunder@optimist-international-school.nl	Teacher coach
Katarzyna Zalewska	katarzynazalewska@optimist-international-school.nl	Confidential person, to support parents and pupils with confidential issues

STAFF OVERVIEW 2020 – 2021



EXTERNAL HEALTH CARE TEAM MEMBERS	EMAIL ADDRESS	ROLE
Leonard van den Broek Marrielle Schendstok	lvandenbroek@ggdkennemerland.nl mschendstok@ggdkennemerland.nl	School doctor and school nurse, do general health checks and can be consulted about health, physical, psychological, emotional, social and behaviour concerns and can do referrals
Glennis Windroll	g.windroll@altra.nl	School coach, can support parents who have questions about raising children or might come across some challenges at home
Els Vervenne	evanlokorst@passendonderwijshaarlemmermeer.nl	Consultant Bridgeteam Samenwerkingsverband 'Passend onderwijs Haarlemmermeer', can help us to put extra support or arrangements in place for children with specific needs
Andrea van Zyl	andrea@speakandlisten.nl	Speech and language therapist

MANAGEMENT	EMAIL ADDRESS	ROLE
Anne-Marie van Holst (Mo, Tu, We, Th)	annemarienvholst@optimist-international-school.nl	Director
Cheryl Embleton (Mo, Tu, Th, Fr)	cherylembleton@optimist-international-school.nl	HR & Business Manager (Asst. Director)
Colleen Cropp (Mo, Tu, Th)	colleencropp@optimist-international-school.nl	Learning leader

OFFICE SUPPORT	EMAIL ADDRESS	ROLE
Fouzia Begam	fouziabegam@optimist-international-school.nl	Admissions & Office Manager
Manon Blaxland	manonblaxland@optimist-international-school.nl	PR & Communications
To be confirmed		Caretaker
Vanessa Vega Jenny Welle	vanessavega@optimist-international-school.nl jennywelle@optimist-international-school.nl	Coordinator After school activities