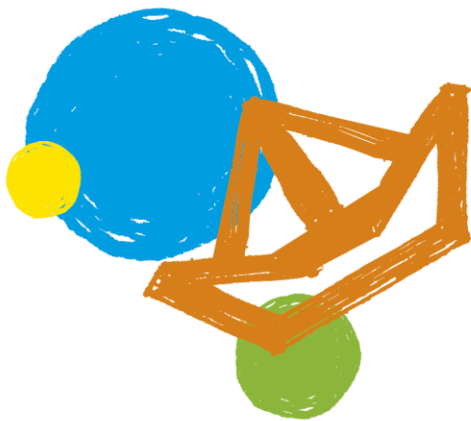




Group Placement

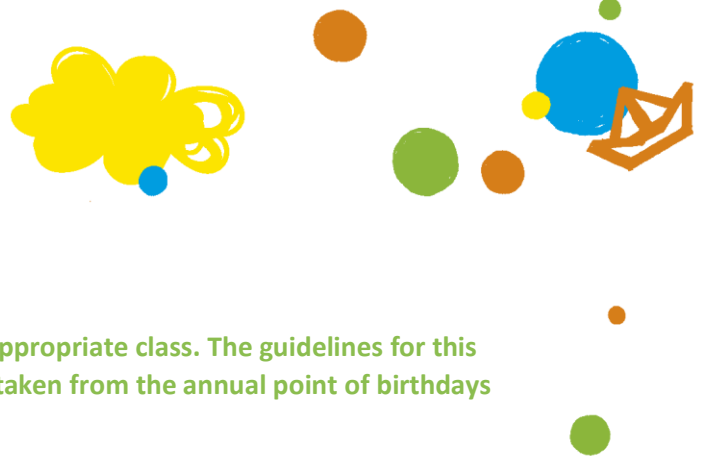
2024-2025



**OPTIMIST
INTERNATIONAL
SCHOOL**

Waddenweg 87
2134 XL Hoofddorp
+31 (0)23 303 59 24

~~~~~
info@optimist-international-school.nl
www.optimist-international-school.nl



PLACEMENT OF STUDENTS

Students are usually placed in a chronologically age-appropriate class. The guidelines for this group selection are contained below. For ease this is taken from the annual point of birthdays from October 1st until 30th September.

Optimist international school offers an international program. Additionally, from Group 6 onwards students have an option to follow our Dutch enrichment program (DEP). The DEP is tailored for students looking to further engage in Dutch society, offering opportunities to enhance their academic Dutch proficiency within their education at Optimist International School. The aim of the DEP is to provide a smoother transition to secondary education in the Netherlands. Further information about the DEP can be found on our [website](#).

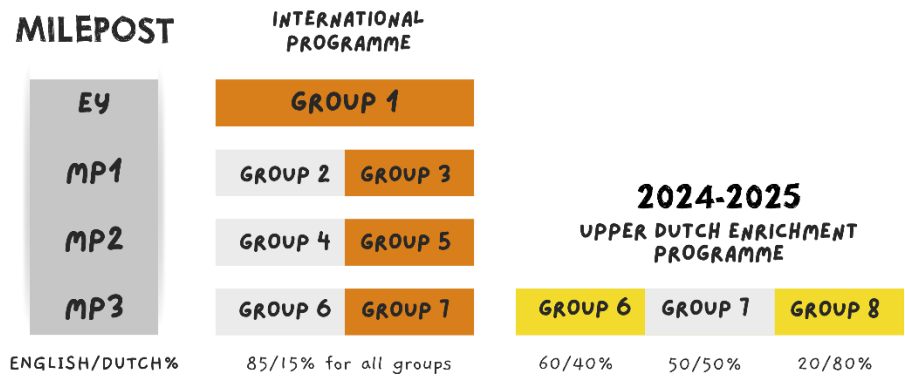
Our primary school spans from:

- * Group 1 to Group 7 in the international programme, catering to children from the ages of 4 to approximately 11
- * Group 6 to Group 8 in the Dutch enrichment program, catering to children from the ages of 9 to approximately 12

Within the International Primary Curriculum (IPC), units and learning objectives are broken down into 'Mileposts' (MP) with each milepost spanning one, two, or three academic years. Within our Mileposts we have one or more groups and where necessary combination groups.

Our Mileposts (MP) consist of:

- | | |
|---|---|
| <ul style="list-style-type: none"> * EY groups 1 * MP1 groups 2 and 3 * MP2 groups 4 and 5 * MP3 groups 6, 6/7, 7 group 8 | <ul style="list-style-type: none"> international programme international programmes international programmes international or Dutch enrichment programmes Dutch enrichment programme |
|---|---|





Students will be placed in a class/milepost along with other students of the same or similar ages. This is usually the best place for academic, social, behavioural, and emotional development of children and it enables them to thrive and learn best from the curriculum. Exceptions to the age recommendations are rare and depend on the child's readiness and the school's assessment. In the Netherlands, students' educational journey typically begins in the month they turn 4 years old, when they start in Group 1. This means children enter school at various times throughout the year, depending on their birthdate. This approach allows for children to begin their education as soon as they are eligible, rather than waiting for the next school year to begin.

The cut-off date for determining in which school year a child starts in primary education is typically October 1st. This means that children who turn 4 before October 1st are eligible to start Group 1 at the beginning of the school year in August or September. Children who turn 4 on or after October 1st will start school during the school year, on their fourth birthday, making them among the youngest in their cohort.

Children would then move to Group 2 at the start of the next school year, in August or September, under the condition that they turn 5 before 1 October. Because children start school at various times during the year in Group 1, based on their birthday, some children will spend more time in Group 1 than others, varying between 10 months (children born on 1 October) and 1 month (children born on 1 November). This variability ensures that each child has adequate time to adjust, learn, and develop at their own pace before moving on to more structured learning in Group 2.

We engage in personalized discussions with parents to determine the best fit for their child. Rest assured, only after thorough assessment by the school counsellor and a decision by the Director of Optimist International School will a child's placement be finalised.

Upon joining our school after the academic year has commenced, we kindly request that new students schedule an initial classroom visit prior to their official start date to acquaint themselves with the teacher and fellow classmates. For our youngest students in Early Years, this introductory session termed 'Come and Play' serves as an opportunity for integration. During the initial weeks, each student undergoes evaluation, and recommendations regarding their group placement may be proposed based on these assessments. Such discussions are conducted in collaboration with the class teacher, the school counsellor, and/or Director. It is important to note that no decisions regarding placement will be finalized without prior consultation with parents.

We aim to have a maximum of 22 students per class. Classes who have (temporarily) more students are provided with extra teaching support. We can have single year groups, as well as combination classes, preferably within a milepost. In a combination group, children of two-year levels are being taught in the same class.



When placing students in a class or splitting a class, we take the profile of the group into consideration: mixed ability levels, social-emotional and learning diversity requirements, English language ability level and gender balance. At the end of each academic year our teaching staff, the Management Team will decide if a class will remain the same or will be mixed. Depending on the number of students new to a class or leaving, in exceptional cases we might have to split a group or combine two groups during the year. There is a dynamic admissions system; students come and go throughout the entire school year (as is the nature of an international school).

GROUP PLACEMENT FOR THE SCHOOL YEAR 2024-2025 OIS

Date of Birth	Age	Optimist International School	British system (UK)	K-12 (US) (India)
1 Oct 2020 – 30 Sep 2021	4	Group 1	Foundation (Reception)	Pre School (Pre-K)
1 Oct 2019 – 30 Sep 2020	4 – 5	Group 1	Foundation (Reception)	Pre School (LKG)
1 Oct 2018 – 30 Sep 2019	5 – 6	Group 2	Key stage 1 – year 1	Kindergarten (UKG)
1 Oct 2017 – 30 Sep 2018	6 – 7	Group 3	Key stage 1 – year 2	Grade 1
1 Oct 2016 – 30 Sep 2017	7 – 8	Group 4	Key stage 2 – year 3	Grade 2
1 Oct 2015 – 30 Sep 2016	8 – 9	Group 5	Key stage 2 – year 4	Grade 3
1 Oct 2014 – 30 Sep 2015	9 – 10	Group 6	Key stage 2 – year 5	Grade 4
1 Oct 2013 – 30 Sep 2014	10 - 11	Group 7	Key stage 2 – year 6	Grade 5
1 Oct 2012 – 30 Sep 2013	11 - 12	Group 8	Key stage 3 – year 7	Grade 6